

Planning approval received

Planning approval has now been received for the RPA Hospital Redevelopment project

The \$940 million redevelopment of the Royal Prince Alfred Hospital is another step closer, following approval of the development application by the NSW Department of Planning and Environment (DPE).

The approval marks a major milestone for the project which will enable a significant component of construction to commence.

This is the most significant investment in RPA's 140-year history to support the world-leading services provided at RPA for the 740,000 people who live in Sydney Local Health District and the more than 1 million people who come into the District each day to work, study and visit.

When complete, the RPA Hospital Redevelopment will deliver:



Expanded and enhanced Emergency Department and Intensive Care Units



Expanded neonatology services



State-of-the-art operating theatres



Improved public domain and services including roads, wayfinding, landscaping and information and communications technology infrastructure



Expanded and improved adult inpatient ward accommodation



A new open garden courtyard



Increased interventional and imaging services

RPA Hospital Redevelopment planning process

Health Infrastructure lodged a State Significant Development Application (SSDA) for the \$940 million RPA Hospital Redevelopment in early 2023. This was the result of two years of detailed planning and extensive consultation with clinicians, operational staff, community members and local and state government agencies.

Following lodgement, the Department of Planning and Environment (DPE) publicly exhibited the SSDA and Environmental Impact Statement. The community was encouraged to review the design and make submissions with feedback.

Once the exhibition period closed, the project team considered the feedback received and provided a response to DPE in July 2023 for review and final approval.

For further detail please see our [planning fact sheet](#).

State Significant Development Application process



Scoping

Scoping Report
Secretary's
Environmental
Assessment
Requirements



EIS preparation

Environmental
Impact
Statement



Public exhibition

An opportunity
for the
community
to make a
submission



Respond to submission

Respond to
the feedback
received



Assessment

Report
produced that
recommends
conditions of
consent



Determination

Determination
of application



Post approval

Assessment
of post
approval
matters

What is a State Significant Development?

Development of a large scale, economic value or that carries potential social or environmental impacts can be deemed to have State significance.

Under the Environmental Planning and Assessment Act 1979 (EP&A Act), projects can be declared State significant development (SSD) if they are important to the State for economic, environmental or social reasons.

The Royal Prince Alfred Hospital Redevelopment was considered significant to the State due to the size, location/site, and the capital investment value.

Who coordinates SSD projects?

The Department of Planning and Environment coordinates the assessment of all SSD projects under the EP&A Act. This involves carrying out relevant administrative functions, coordinating inputs from State and Commonwealth agencies and working closely with councils to ensure local and regional issues are considered.

Community involvement is essential to the process and all SSD applications are on exhibition for at least 28 days.

Who determines State significant development applications?

The Department prepares a detailed government-wide assessment report on the merits of an SSD project for the consent authority.

SSD projects are assessed under Division 4.7 of the EP&A Act and require development consent from the Independent Planning Commission or the Minister for Planning (or delegate) before proceeding.

The Minister is the consent authority for all other SSD applications. In some cases the Minister may delegate his decision-making function to department staff.

The exhibition process

An exhibition process allows any individual or organisation to have their say about a proposed development. The RPA Hospital Redevelopment SSD application, environmental impact statement (EIS) and accompanying documents were on exhibition from Thursday 2 February 2023 until Wednesday 1 March 2023.

The community was encouraged to make submissions.

Our commitment to engagement

We continue to work closely with the staff, consumers and the community to share project information, updates and to ask for feedback. To see what feedback we have received, and the improvements we have made to the designs, please see our Engagement Outcome Reports which documents this in detail.

Where to next?

You can find out more about the redevelopment at: rparedevelopment.health.nsw.gov.au.

You are also invited to send any feedback, suggestions or comments you would like to raise with the redevelopment team via the contact form on our website or by emailing: rparedevelopment@health.nsw.gov.au

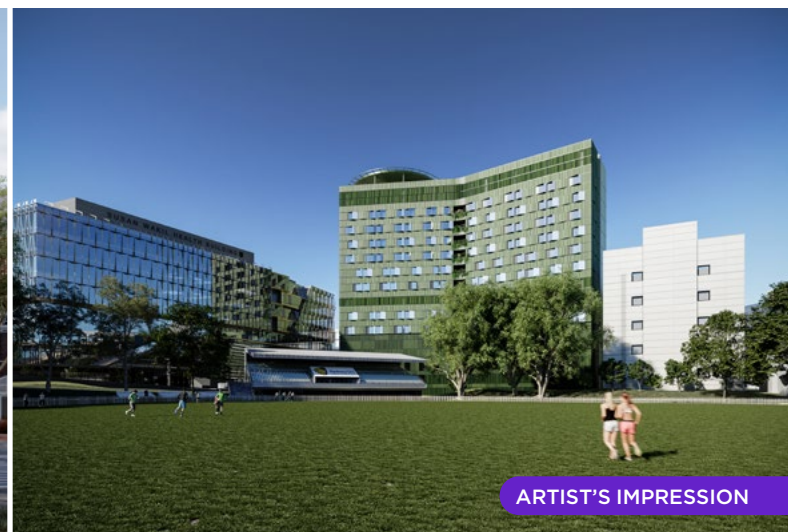
 [Previous Newsletters](#)

 [Fact Sheets](#)

 [Community Engagement](#)

 [Latest News](#)

 [Works Notifications](#)



How can I contact the project team?

If you have any questions or would like more information please contact our project team at the details below.

Email: rparedevelopment@health.nsw.gov.au | **Website:** rparedevelopment.health.nsw.gov.au