

Engagement stats

357
survey responses

36,000
properties mailboxed

750
flyers handed out

emails
to staff

29.6K
People reached
via SLHD Facebook
interactions and posts

Website
launch and
LinkedIn posts

Gender of respondents

74%
Female

22%
Male

1%
Non-binary

3%
Prefer not
to say

Age range of respondents

14%
18-30
years

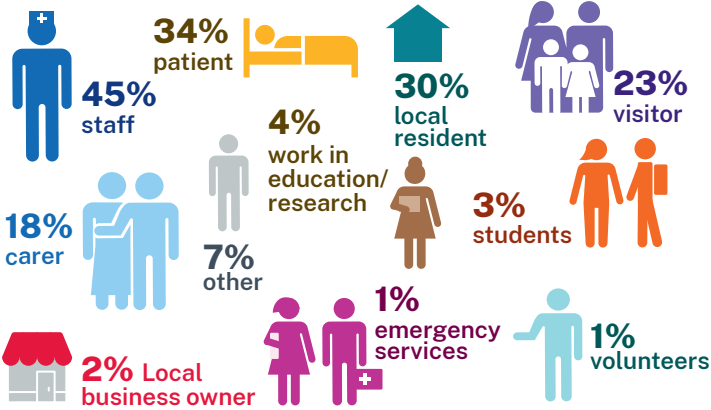
42%
31-45
years

19%
46-55
years

17%
56-65
years

8%
Over
65

Type of respondents



*respondents could choose more than one category

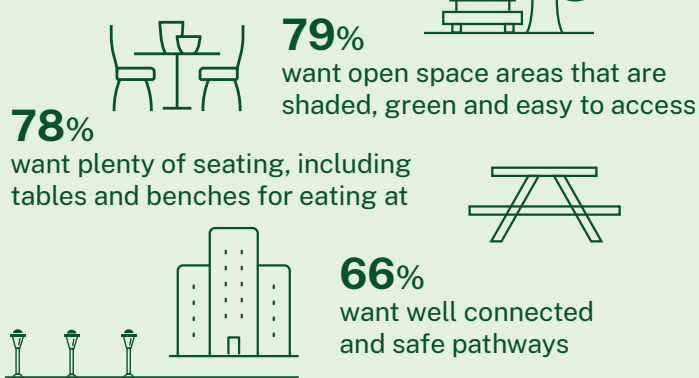
Indoor public spaces

Top three considerations



Outdoor public spaces

Top three considerations



Wayfinding

Top three most useful wayfinding types for respondents

93%
of respondents rank wayfinding important / very important

1 Directional signage

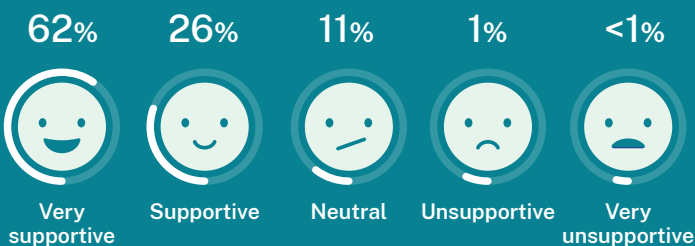


2 Hospital map and Concierge

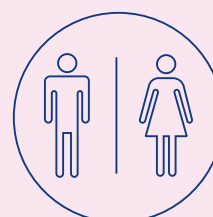
3 Building signs



How respondents feel about RPA redevelopment



Ways to improve amenities for staff



Improve restrooms

Improved food options



Outdoor spaces for staff only