

## Year in Review

### 1.1 Engagement Launch – March

The RPA Hospital Redevelopment project launched their community consultation in March 2022. Community, consumers and staff were called upon to provide input into the redevelopment to ensure the new hospital meets the area's growing needs for health services into the future.



### 1.2 What we heard

Thank you to everyone who shared their thoughts and ideas through our Have Your Say on the Royal Prince Alfred (RPA) Redevelopment survey. The survey was launched in March and was closed in April 2022.

We had hundreds of responses, and your feedback will help shape the future of RPA. We heard from patients, staff, carers, local residents and volunteers across the RPA footprint.

#### Engagement stats

 **357**  
survey responses

**36,000**   
properties mailboxed

 **750**  
flyers handed out

 **emails to staff**

**29.6K**  
 **People reached via SLHD Facebook interactions and posts**

 **Website launch and LinkedIn posts**

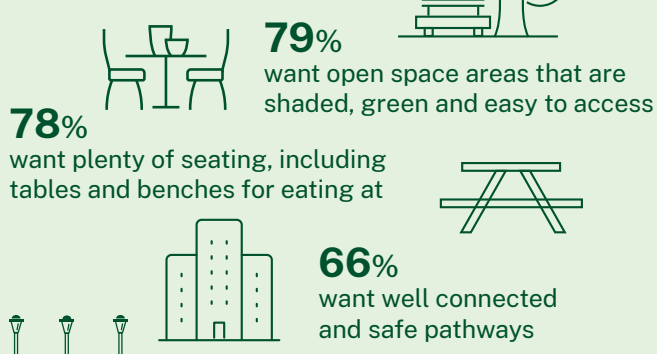
#### Indoor public spaces

##### Top three considerations



#### Outdoor public spaces

##### Top three considerations



#### Wayfinding

##### Top three most useful wayfinding types for respondents

**93%** of respondents rank wayfinding important / very important

**1** Directional signage

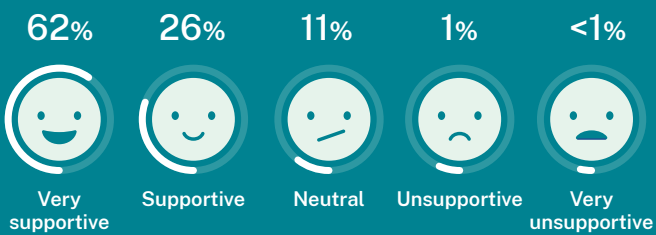


**2** Hospital map and Concierge

**3** Building signs



## How respondents feel about RPA redevelopment



## Ways to improve amenities for staff



## 1.3 Concept Design

In September we unveiled the designs showcasing our new hospital. The hospital's design will be unique, open, welcoming, and culturally attuned to respect all members of this wonderfully diverse community, while achieving new levels of sustainability.

The designs were unveiled and presented to the public in a series of engagement session that ran throughout September.



## What services will the development deliver?



Expanded and enhanced Emergency Department and Intensive Care Units



Neonatology services



State-of-the-art operating theatres



Facilities and capabilities for integrated research, education and training



Increased interventional and imaging services

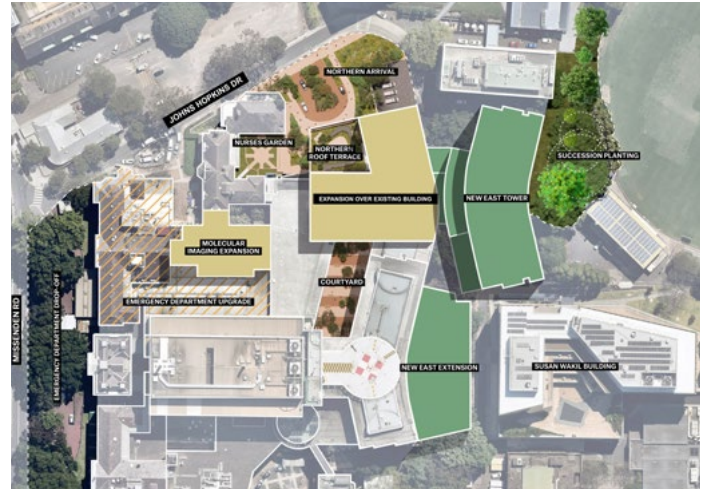


Improved public domain and services including roads, wayfinding, landscaping and information and communications technology infrastructure.



## 1.4 Project User Groups

The \$750 million Royal Prince Alfred (RPA) Hospital redevelopment has entered the Schematic Design stage following the successful unveiling of the hospital's concept designs. As part of this next design stage, Health Infrastructure is working with Project User Groups (PUGs) to ensure that the newly built hospital will operate efficiently whilst providing high quality care.



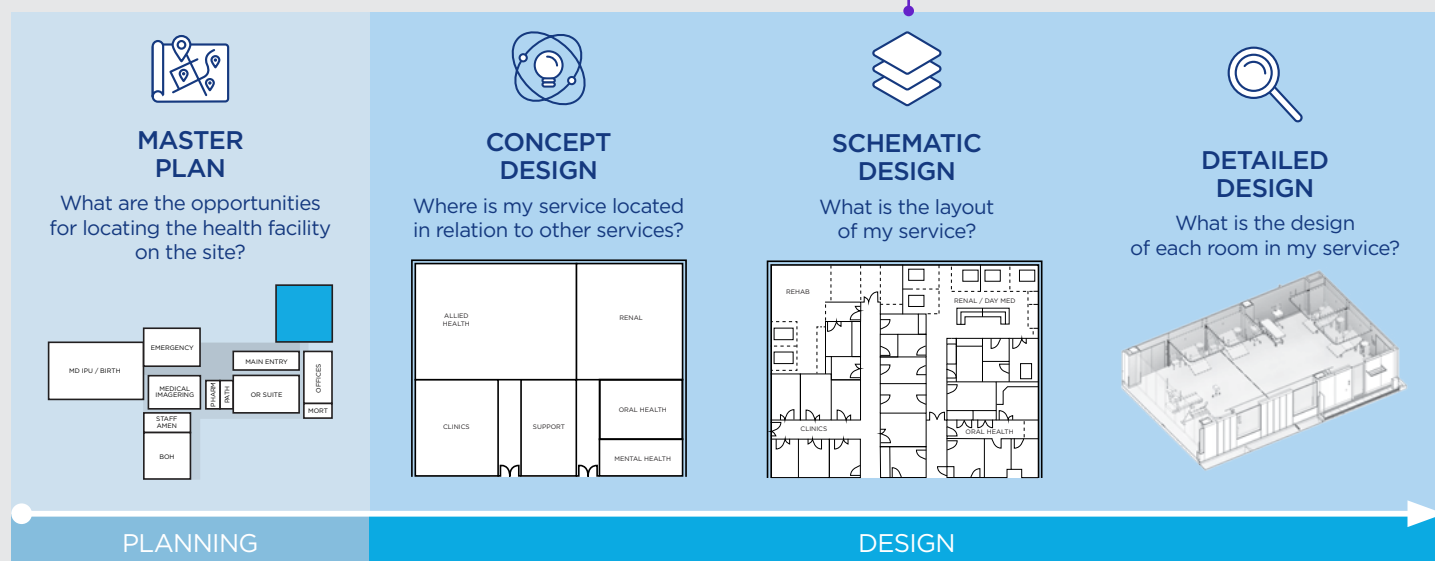
## 1.5 Enabling Works Commencement

In November 2022, we celebrated an exciting milestone for the \$750 Million RPA Hospital Redevelopment. We announced the commencement of enabling works and the appointment of Barpa, the enabling works contractor. Uncle Brendan Kerin conducted a traditional smoking ceremony in preparation for the commencement of enabling works.





## Example of Project Planning and Design



## How can I contact the project team?

If you have any questions or would like more information please contact our project team at the details below.

**Email:** [rpadevelopment@health.nsw.gov.au](mailto:rpadevelopment@health.nsw.gov.au) | **Website:** [www.rpadevelopment.health.nsw.gov.au](http://www.rpadevelopment.health.nsw.gov.au)