

## Detailed Design

The NSW Government's \$750 million redevelopment of the Royal Prince Alfred (RPA) Hospital has entered the detailed design stage following the unveiling of the project's fly-through animation design in February 2023.

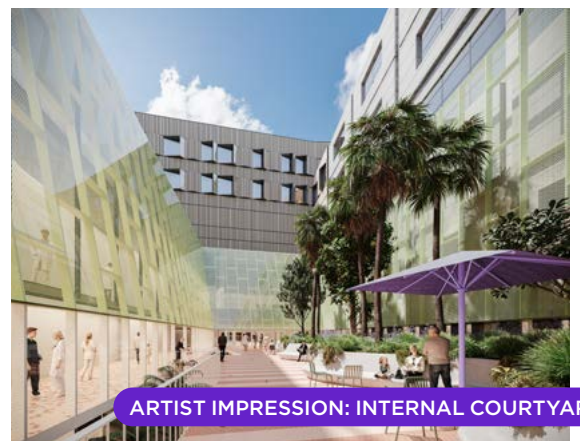
The final stage of the design process, detailed design, is set to be completed by late 2023.

Following a successful schematic design phase where key stakeholders helped map out the locations and functions of each space to optimize workflow and patient movement, the detailed design phase will deliver an in-depth view of each individual room and space that will be delivered.

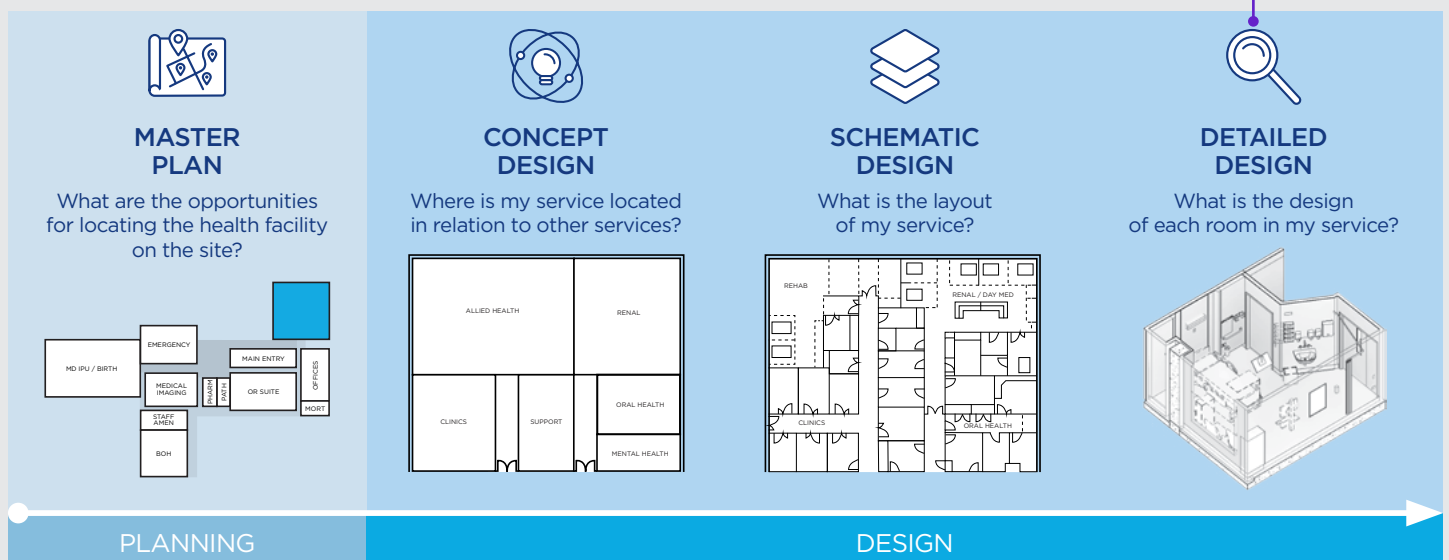
During this phase, a data sheet is made up for each and every room in the hospital, including specifications for the layout of furniture, fittings and equipment. This detailed design ensures the hospital operates efficiently while always maintaining high quality of care.

Going into specific room and ward layouts, this phase also includes the development of the final façade of the building and produces a complete list of technology, fixtures, furnishings and equipment.

Extensive consultation occurs with staff, clinicians, patients, consumers and the community during the design phase to ensure the right needs are met. Find out how our Project User Groups (PUGs) continue to help inform the detailed design phase in our [Fact Sheet on Project User Groups](#).









### Example of Project Planning and Design



## Project overview

When complete, the RPA Redevelopment will deliver:

	Expanded and enhanced Emergency Department and Intensive Care Units		Increased interventional and imaging services
	State-of-the-art operating theatres		Expanded neonatal services
	Expanded and improved adult inpatient accommodation		Improved public domain and services including roads, wayfinding, landscaping and information and communications technology infrastructure.

## Next steps

Only after we have conducted our extensive planning and design process can we start building a contemporary, bright and welcoming facility that meets the needs of staff, clinicians, patients and visitors now and for generations to come.

Following the in-depth detailed design phase, the project will move into the third stage, delivery. This stage will see the main works contractors awarded and construction commence. As we progress through this exciting project, we look forward to keeping you updated.

## How to build a hospital

Health Infrastructure has developed a systematic approach to redeveloping hospital and health care facilities. There are three distinct phases in how to build a hospital; Planning, design, construction.

Only after we have conducted an extensive planning and design process can we start building a contemporary, bright and welcoming facility that meets the needs of staff, clinicians, patients and visitors now and for generations to come.

**Check out this video to find out more about how to build a hospital.**



## Want to find out more?

You can find out more about the redevelopment at: [rpadevelopment.health.nsw.gov.au](http://rpadevelopment.health.nsw.gov.au).

You are also invited to send any feedback, suggestions or comments you would like to raise with the redevelopment team via the contact form on our website or by emailing: [rpadevelopment@health.nsw.gov.au](mailto:rpadevelopment@health.nsw.gov.au).

## Key Milestones



## How can I contact the project team?

If you have any questions or would like more information please contact our project team at the details below.

**Email:** [rpadevelopment@health.nsw.gov.au](mailto:rpadevelopment@health.nsw.gov.au) | **Website:** [www.rpadevelopment.health.nsw.gov.au](http://www.rpadevelopment.health.nsw.gov.au)