

Project update

RPA Hospital Redevelopment

May 2025



The NSW Government has committed \$940 million to the redevelopment of the Royal Prince Alfred (RPA) Hospital to deliver a new hospital building and refurbishment of existing spaces.



Expanded and enhanced Emergency Department and Intensive Care Units



Expanded neonatal intensive care services



State-of-the-art operating theatres



Improved roads, signage and landscaping throughout the hospital



Expanded and improved adult and paediatrics inpatient ward accommodation



New northern arrival and new open garden courtyard



Increased interventional and imaging services

Winners and runners-up of the Name the Crane competition at a recent visit to the RPA Hospital Redevelopment site.



Name the Crane competition

The two tower cranes supporting the delivery of the \$940 million Royal Prince Alfred (RPA) Hospital redevelopment will officially be known as 'Burbangana' and 'Nightingale', thanks to the creativity of local school students.

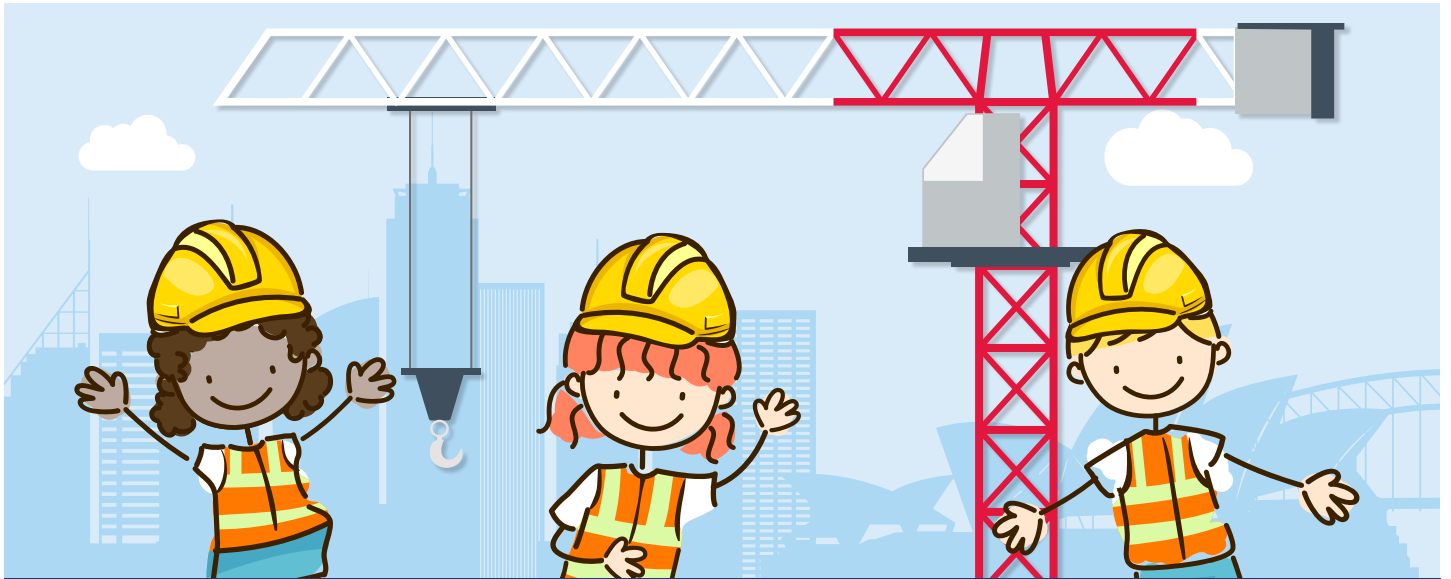
The redevelopment project team engaged local schools and staff and encouraged them to get involved in the project through the naming of the two tower cranes. More than 140 highly creative and imaginative entries were received from local primary school children across the region, directly engaging our youngest residents in the RPA Hospital Redevelopment.

Maeve Shipp, 8, and Eden McMahon, 5, have named the two tower cranes that will build the new East Tower at RPA. Maeve chose the Indigenous name 'Burbangana', meaning "to take hold of my hand and help me up", while Eden selected 'Nightingale', in honour of RPA's nurses.

The winners of RPA Hospital Redevelopment's 'Name the Crane' competition were announced and the cranes were officially named at an event on the hospital campus on 10 April 2025. The winners and runners-up joined us for an afternoon of fun and adventure, touring the project site and getting a behind-the-scenes look at the redevelopment. Throughout the visit, the children were introduced to some of our project leaders and learned more about what it takes to bring a hospital redevelopment to life.

The winning names will be displayed on the cranes while they help to construct the new 15-storey East Tower building, which will deliver contemporary and expanded hospital services for the community.

Thank you to everyone who entered the 'Name the Crane' Competition for RPA Hospital Redevelopment – your ideas are helping us build something truly special.



Runners-up

Mercury

Because cranes are tall and really cool, and planets are also really high.

Jocelyn Armour, age 9

Mariyung

On Gadigal land where RPAH stands, Mariyung means emu – tall like a crane. The crane's nickname could be Mari, short for Mariyung.

Zara Thomas, age 10

Lofty Alfred

Named after RPA – it's a tall crane looking over the hospital.

Jude Nguyen, Age 5

Dinoliftersaur

It's a combination of a dinosaur with a long neck and the crane's job to lift.

Judah Svensson, Age 7

Dhuralya

A Dharug word for 'Australian Crane', the Brolga (a Gamilaraay word). A respectful and inclusive nod to traditional local language.

Orla Buckingham, Age 11

Burranga

From the Gamilaraay language, Burranga refers to Australia's tallest flying birds – guardians of the land, just like the crane watching over RPA.

Jensen Sierchio, Age 8

Bunjil

A Wedge-tailed Eagle and powerful creator spirit in Aboriginal mythology. Like cranes, Bunjil represents strength, vision, and guidance.

Areeb Abdullah, Age 11

Alfred and Maria

Named after Alfred, RPA's namesake, and his wife Maria.

Saraia Cavasin-Pritchard, Age 6

The winning names

Nightingale

To honour all nurses who care for patients at RPA.

Eden McMahon, Age 5

Burbangana

A beautiful Dharug word meaning 'take my hand and help me up'. It symbolises the support from doctors, nurses – and cranes lifting healing skyward.

Maeve Shipp, Age 8



[Click here or scan the QR code to watch the "Name the Crane" ceremony!](#)

Construction update

With the first tower crane now installed, we are beginning to see the East Tower take shape. The central lift structure of the new building has now risen to Level 6.

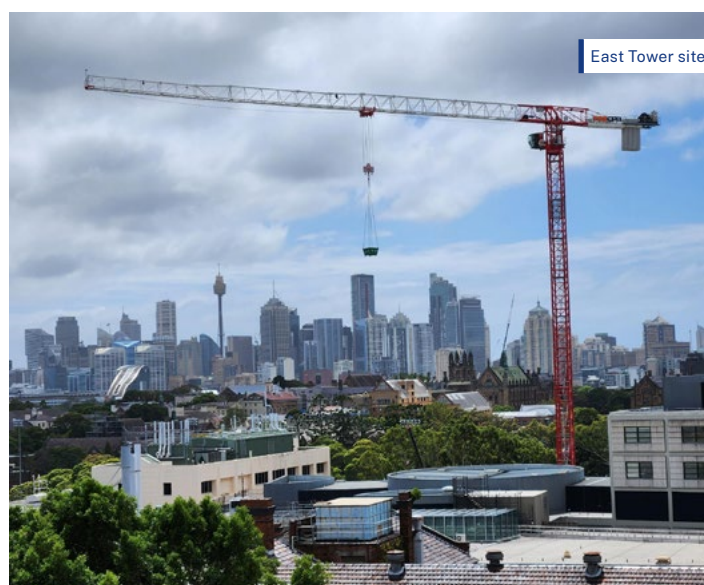
The East Tower is shaped in a soft butterfly form that embraces the open landscape of Sydney University Oval. Its layout maximises views from rooms and common areas, providing a calming outlook for patients and a high-amenity workplace for staff. Patient rooms are designed to deliver privacy and dignity.

Excavations are progressing well, with major service diversions nearing completion and piling under way. Essential services, such as main sewer and water conduits, are being rerouted and diverted to make way for the redevelopment.

Within the hospital, the builder continues to reconfigure parts of the existing hospital to enable the future connection to the new East Tower. While these works are essential, we understand they can be disruptive. Our project team is working hard to mitigate impacts on the operation of the hospital and its environment.

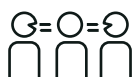
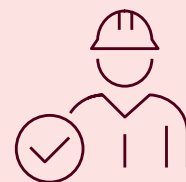
During the construction period along Johns Hopkins Drive and around the Lambie Dew Drive area, we encourage staff, patients and visitors to please be careful and pay close attention to traffic controllers and signage. We appreciate your patience and support while these important works are completed.

It is going to be a big year for the project, with works taking place right across the east campus. Thank you for your support and patience this year as we progress the RPA Hospital Redevelopment.



Safety

Throughout the construction of the RPA Hospital Redevelopment the safety of staff, patients, residents, visitors, neighbours, and teams working on-site are our main priorities. We will continue to share construction timeframes and impacts to keep everyone informed, and help minimise disruption to staff, patients and carers.



For an interpreter, call **131 450** and ask them to call **02 9978 5901**

For more information

T: 02 9978 5901

E: HI-RPARedevlopment@health.nsw.gov.au

W: rparedevelopment.health.nsw.gov.au