

## We're listening

Thank you to everyone who shared their thoughts and ideas through our recent Have Your Say on the Royal Prince Alfred (RPA) Redevelopment survey. We had hundreds of responses, and your feedback will help shape the future of RPA.

We heard from patients, staff, carers, local residents and volunteers across the RPA footprint.

Overall 88 per cent of our respondents are supportive of the RPA redevelopment. More than 79 per cent of respondents indicated that they want open spaces that are shaded, green and easy to access. In relation to outdoor space, 78 per cent want plenty of seating, including tables and benches for eating, and 66 per cent feel that pathways should be well connected and safe.

In reference to the physical indoor space, 68 per cent would like to see improved seating and waiting areas, with 63 per cent saying that a variety of food, beverage and retail options were important. About

45 per cent of people surveyed would like to see a hospital entrance that is welcoming and inclusive.

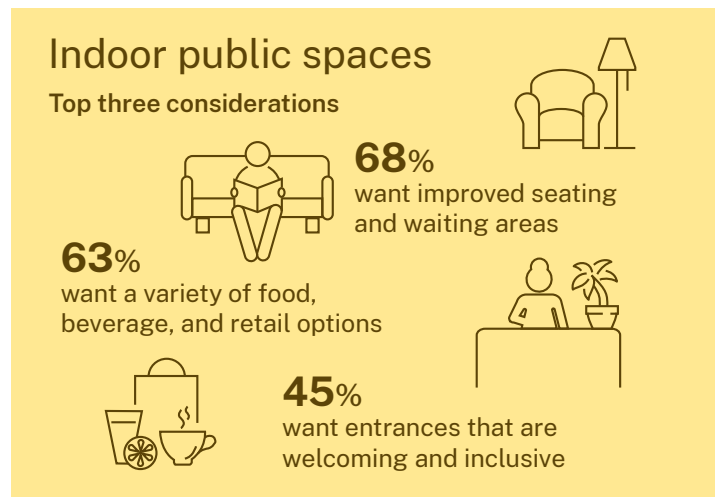
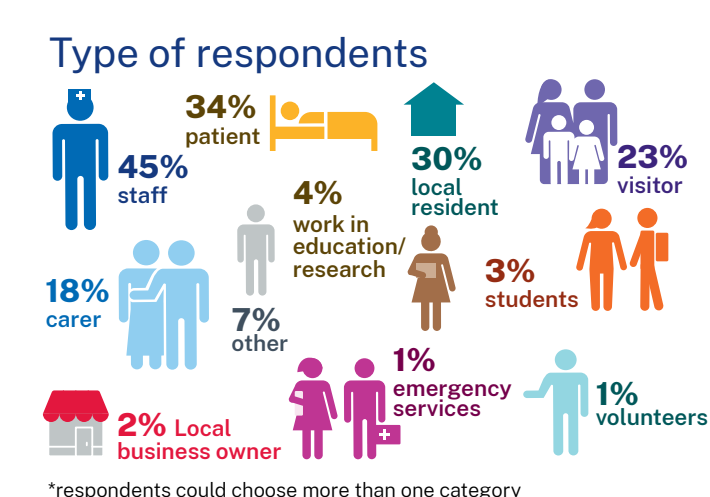
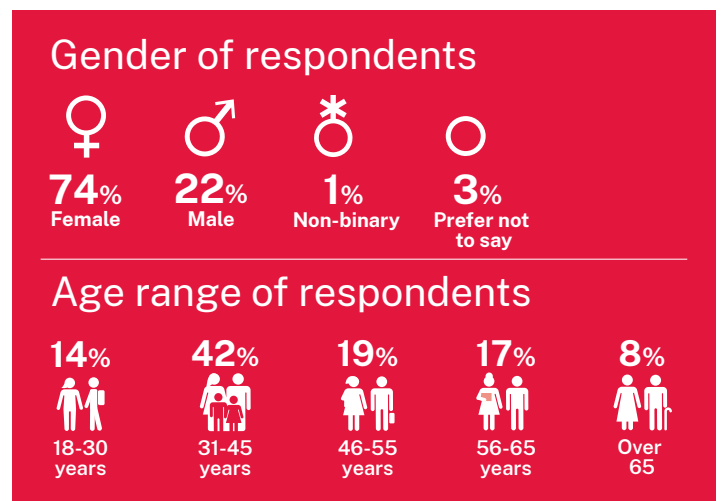
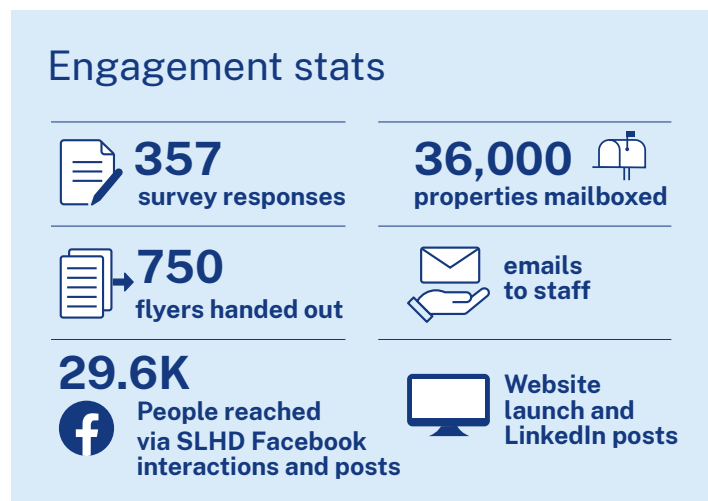
More than 93 per cent of respondents told us that way finding is important and must be considered in the planning of the redevelopment. The top three suggestions were directional signage, hospital map and concierge and building signs.

Through your input we will plan and deliver a facility that helps foster wellbeing amongst patients, staff and visitors and takes in the future needs and requests of the community.

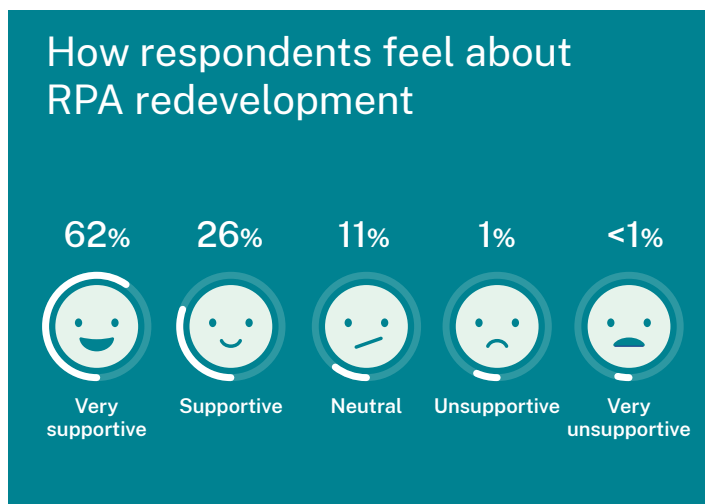
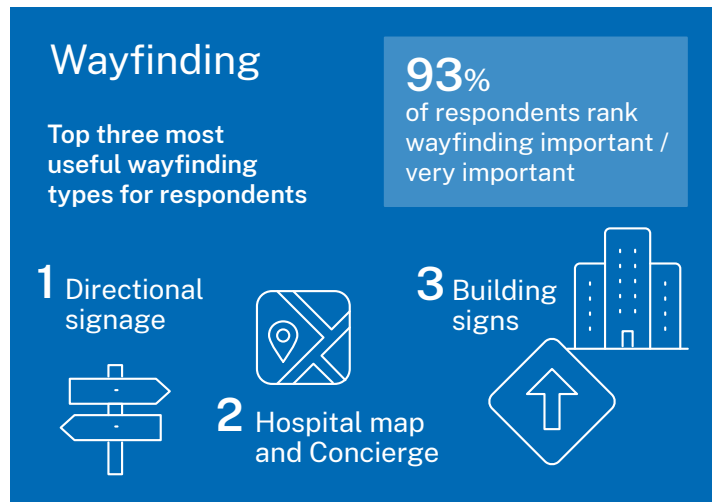
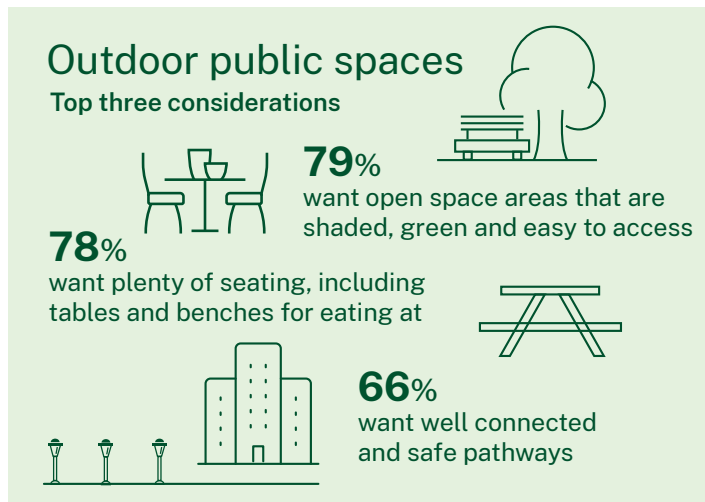
Planning for the RPA redevelopment continues to take shape and the engaged community is getting involved and having their say on what they would like to see.

The Project team would like to thank you for taking part in our recent survey.

## Survey results



## Survey results



## Conversations will continue

This is a significant redevelopment and planning and design will be a collaborative process involving continued consultation with clinicians, staff, patient groups, our stakeholders and the community. More information about consultation and how to get involved will be available as planning progresses. There's lots of ways to stay up-to-date on what's happening with the redevelopment.

If you'd like to contact us, please email: [rpadevelopment@health.nsw.gov.au](mailto:rpadevelopment@health.nsw.gov.au) or visit our web page: [www.rpadevelopment.health.nsw.gov.au](http://www.rpadevelopment.health.nsw.gov.au)

Don't forget to register on our website to receive newsletters and updates about the RPA Redevelopment as it progresses.

## How can I contact the project team?

If you have any questions or would like more information please contact our project team at the details below.

**Email:** [rpadevelopment@health.nsw.gov.au](mailto:rpadevelopment@health.nsw.gov.au) | **Website:** [www.rpadevelopment.health.nsw.gov.au](http://www.rpadevelopment.health.nsw.gov.au)